

The *Simple* SERIES

Production Homebuilder Edition

Simple Estimating *Simple* Scheduling *Simple* Job Accounting

Contractors Software Group delivers a fully integrated estimating, proposal writing, scheduling, change order management, purchase order and job cost accounting solution. It's easy to use, and very affordable.



The *Simple Series* is designed specifically for Microsoft Windows so information is just a simple mouse click away. You'll be amazed at how easy it is to set the system up and how simple it is to operate — even if you're new to computers.

You'll find dozens of Production homebuilder-specific features (something that's missing from those general systems.) Up-to-the-minute information on job status, contract changes and budgets lets you make better, more informed decisions.

The *Simple Series* will give you all the reports you need to manage your business with confidence. You choose only the information you need — detail or summary reports, summaries by cost category or job variance reports and more.

The *Simple Series* is brought to you by the talented professionals at Contractors Software Group, Inc. Our team of construction experts have extensive experience working with builders and contractors nationwide. We've incorporated our years of experience into our software so you can be assured of a system that can handle your business today — *and tomorrow.*

Put your energy into construction, not your software! For more information on *The Simple Series* or to place an order, call the construction software experts at Contractors Software Group, Inc. at 800-866-3083. Or, visit our web site at www.csgsoftware.com.

Increase **PRODUCTIVITY**

Increase **PROFITABILITY**

Increase **BUSINESS**

Simple Estimating Features



Simple Estimating is perfect for production homebuilders looking to generate detailed or summary budgets based upon pre-setup floor plans and options.

Simple Estimating will estimate the entire job - from grading to punch out. Whatever you need to estimate, including concrete work, framing, siding, brick, stucco, drywall, paint and allowances, can be done quickly and easily.

Powerful features, such as *assemblies*, help speed the estimating process and ensure accuracy. An assembly is a group of items commonly used together such as a 4" concrete slab or a 9' interior wall.

A 4" concrete slab could include items such as 3000 PSI concrete, wire mesh, gravel and sub labor. Enter the square footage of 4" concrete and **Simple Estimating** calculates the order quantities and costs of each associated and help eliminate omissions.

Simple Estimating gives you all the reports you need to estimate with confidence. Reports include quantities and material costs, labor costs, sub quotes, overhead, profits, customer proposals / specifications and more.

Bid Report - Subtotal by Subdivision				<i>No Sales Tax</i>
21-Apr-09		IBS 2009		
Bid	Div	Subdivision		
Ander47		Happy Valley-Lot2		
01	0100	General Conditions		\$61,910.00
01	0105	Temporary Facilities		\$6,520.00
01	0110	Survey		\$500.00
02	0200	Site Preparation		\$1,170.00
02	0205	Earthwork		\$2,994.00
02	0210	Utility Services		\$1,000.00
02	0215	Drainage		\$1,446.25
02	0230	Gravel, Paver Base, Fill		\$821.40
03	0300	Footings		\$1,900.00
03	0310	Block Walls		\$4,200.00
04	0400	Framing Lumber		\$10,331.50
04	0410	Treated Lumber		\$1,925.08
04	0420	Deck Framing Package		\$7,316.73
04	0425	Wall Framing Package		\$5,174.35
04	0430	Roof Framing Package		\$4,352.00
05	0500	Roll Insulation		\$467.74
05	0515	Moisture Barriers		\$29.22

Simple Estimating Features



Standard Floor Plans - Build a complete bid catalog of standard home floor plans with itemized costs and specifications.

Standard Options - Build a complete catalog of standard home options with itemized costs and specifications.

Create Customer's Specifications - Produce fast and easy specifications for the customer to sign.

Change Orders - Estimate and print, fax or e-mail customer change orders.

Assemblies (also called work packages) - Includes many pre-built assemblies to speed the estimating process. Easy to add other assemblies as needed.

Locations - Tracks and reports on bid items and costs by location. Sorts bid by location such as basement, first floor, second floor and so forth — even individual rooms!

Bid Markups - Markup a bid by percentage, cost type, total costs or flat dollar amount. Each bid can be marked up using a different method.

Bid Specific Pricing - Easily handles special pricing from suppliers for a particular job. *Simple Estimating* allows you to modify the price of an item for a specific bid while maintaining the standard item price in the catalog.

Clone an Existing Bid - Helps you estimate even faster. If you estimate similar jobs with some modifications, you can create a new bid based on an existing bid. On the new bid you simply make the appropriate modifications such as changing brick to stucco.

Maintain Unlimited Items, Assemblies & More - There's no limit to the number of items, assemblies or other catalog data you can maintain.

Updating Pricing - Easily update your prices.

Cost vs. Sales Prices - Easily track the costs and sales prices of items and assemblies. Easy to produce a check list of options and associated sales price.

Board Foot Conversion - Lets you take off the bid per piece and then have the system convert prices to board feet.

Key Measurements - Enter the key measurement and automatically update takeoff quantities for multiple items and assemblies. For instance, SF of Interior or LF of Perimeter.

Integrating with *Simple Job Accounting* - Automatically create job information, job cost, budgets, purchase orders, and sub-contracts from completed estimates.

Bid Detail by Location

14-Apr-09	Ander47	Happy Valley-Lot2	IBS 2009			
Location	Item Code		Qty	Unit	Unit Cost	Total
					Location Total	\$111,209.32
BR2						
	160000	Mirror & Glasswork Lump Sum	700.00	\$	\$1.00	\$700.00
	160510	White T.P. Holder	3.00	EA	\$6.50	\$19.50
	160512	White 12" Towel Bar	3.00	EA	\$6.50	\$19.50
	160514	White 24" Towel Bar	6.00	EA	\$7.50	\$45.00
					Location Total	\$784.00
GEN						
	010000	Building Permits	1.00	EA	\$1,200.00	\$1,200.00
	010010	Blue Prints	1.00	EA	\$1,000.00	\$1,000.00
	010011	Plot Plans	500.00	EA	\$1.00	\$500.00
	010015	Insurance	1,000.00	EA	\$1.16	\$1,160.00
	010016	Appraisal	500.00	EA	\$1.00	\$500.00



IBS 2009
 1834 North St. Paul Road
 St. Paul, MN 55109
 PH: (651) 777-7716 / Fax: (651) 777-8333

**Proposals/Specifications
 can be printed by
 category or by location.**

Customer:
Tom Shoemaker and Sue Shoemaker

1488 No 6th St
 Bloomington, MN 55450

**Ander4 /
 Happy Valley-Lot2**

Job Address:
 1234 Happy Valley Road
 Norcross, MN 302020202

Item Specs	Option Color	Total Price
------------	--------------	-------------

Wall Framing Package

Wall includes: 2x4 bottom plate, 2x4 Double top plate, 2x4 studs 16" on center, 1/2" Drywall both sides, taped and finished.

Wall includes: 7/16 OSB Sheathing, 2x6 studs, 2x6 bottom plate, 2x6 double top plate, 4 mil vapor barrier, R-19 Insulation, 1/2" Drywall taped and finished.

Window Opening Includes: 2x8 Header, 2x6 studs, 2x6 sill plate

Deck

Deck Framing Package

Green Plate Includes: 2x8x16' Green Treat, Foam Sill Sealer, Anchor Bolts

Subtotal: **\$221,798.69**

Options:

Appliances

Commercial Grade Range

\$483.00

Subtotal Options: **\$483.00**

Grand Total: **\$222,281.69**

Terms:

Proposal Includes Material and Labor. Payment terms as follows: 10 percent down with 30% up on rough in, 30% upon final and 30% upon completion.

APPROVED:

IBS 2009

Buyer

Buyer

Date:

Title:

Date:



IBS 2009
 1834 North St. Paul Road
 St. Paul, MN 55109
 PH: (651) 777-7716 / Fax (651) 777-8350



Contract Change Orders

Customer

Bill Anderson
 1234 Valley Place
 Brooklyn Park MN 55555
 (800) 444-8888 somebody@AOL.com

Job Code: Ander47

Happy Valley-Lot2

Job Address

1234 Happy Valley Road
 Norcross MN 302020202

Approved	Contract Change #	Date	Description	Change Order Amount
<input checked="" type="checkbox"/>	1	12/22/2008	add a deck	\$2,000.00
Original Contract Amount				\$223,000.00
Previously Approved Change Orders				\$2,000.00
Total Pending Change Orders (as shown above)				\$0.00
New Contract Amount				\$225,000.00

Terms

The work outlined above shall be performed under the same terms and conditions as the original contract. This change order must be signed and returned promptly. Failure to do so will result in the contractor continuing work without the items listed in this change order. The total amount is due on or before the date specified. Payment in full is required for completion of the project. No work will be added to your mortgage unless we are instructed to do so.



will continue without the items listed in this change order. The total amount is due on or before the date specified. Payment in full is required for completion of the project. No work will be added to your mortgage unless we are instructed to do so.

APPROVED:

IBS 2009

Buyer

Buyer

Title:

Bid Detail by Div\Subdivision

IBS 2009

07-Apr-09

Ander47

Happy Valley-Lot2

Div	Subdivision	Item Code	Qty	Unit Cost	Unit	Total
			Total for Div	02		\$7,431.65
03						
0300	Footings					
030000	Footings Lump Sum		1,900.00	\$1.00	\$	\$1,900.00
						\$1,900.00
0310	Block Walls					
031000	Block Wall Lump Sum		4,200.00	\$1.00	\$	\$4,200.00
						\$4,200.00
			Total for Div	03		\$6,100.00
04						
0400	Framing Lumber					
040003	2x4x92" SPF		163.50	\$1.99	EA	\$325.37
040008	2x4x16 SPF		40.88	\$4.29	EA	\$175.35
040057	2x12x20 SPF		2.00	\$7.89	EA	\$15.78
040220	Framing Labor - Living SF		2,500.00	\$2.35	SF	\$5,875.00
040221	Framing Labor - Garage SF		1,000.00	\$2.00	SF	\$2,000.00
040222	Framing Labor - Deck/Porch		770.00	\$2.00	SF	\$1,540.00
040225	Nail Allowance		2.00	\$200.00	EA	\$400.00
						\$10,331.50
0410	Treated Lumber					
041001	2x4x8 GT		8.00	\$3.29	EA	\$26.32
041034	2x10x16 GT		16.00	\$8.89	EA	\$142.24
041036	2x10x20 GT		1.00	\$10.69	EA	\$10.69
041046	2x12x20 GT		0.00	\$11.99	EA	\$0.00
041062	2x4 Handrail GT		8.00	\$4.76	EA	\$38.08
041064	4x4x8 GT		5.00	\$4.50	EA	\$22.50
041070	4x4x48" Chamfered Deck Post		13.00	\$4.25	EA	\$55.25
041084	5/4x6x16 Deck Board GT		156.00	\$8.50	EA	\$1,326.00
041086	5/4x6x20 Deck Board GT		32.00	\$9.50	EA	\$304.00
						\$1,925.08
0420	Deck Framing Package					

*Simple Estimating is fully integrated
with Simple Scheduling and
Simple Job Accounting, so you only
have to enter information once.*



Item List

07-Apr-09

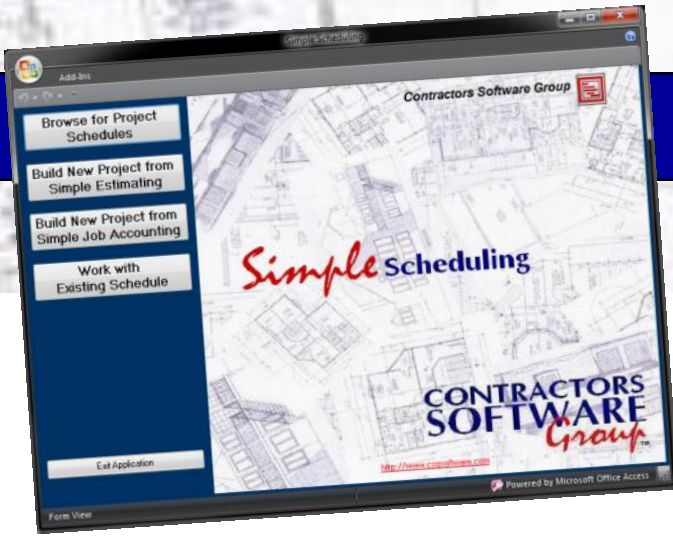
IBS 2009

Div	Type	Item Code		Unit	Unit Cost	Std Vendor
01	S	010000	Building Permits	EA	\$1,200.00	1STD PRICE
01	S	010010	Blue Prints	EA	\$1,000.00	1STD PRICE
01	S	010011	Plot Plans	EA	\$1.00	1STD PRICE
01	S	010015	Insurance	EA	\$1.16	1STD PRICE
01	A	010016	Appraisal	EA	\$1.00	1STD PRICE
01	A	010017	Title Insurance	EA	\$1.00	1STD PRICE
01	A	010018	Legal Fees	EA	\$1.10	1STD PRICE
01	A	010020	Finance Cost			CE
01	A	010021	Lot Purchase Price			CE
01	A	010022	Taxes			CE
01	E	010501	Portable Toilet			CE
01	E	010502	Job Trailer			CE
01	E	010505	Temp Utility Bills			CE
01	L	010510	Job Supervision			CE
01	S	011000	Survey & Layout			CE
02	S	020001	Clear & Grub	ACR	\$2,500.00	1STD PRICE
02	S	020002	Chipping Stumps	EA	\$22.00	
02	M	020003	Trash Removal - Clearing Site			
02	M	020004	Trash			
02	M	020005				

**Comes Standard
with 700 Items
and 30 Assemblies.**

Assembly Code	Item Code	Multipl Code	Multiplier	Subdivision
09 8FT2X4INT	8' - 2x4 Interior Wall, Drywall both sides	160C	0.75	0400
	2x4x92" SPF	1	0.1875	0400
	2x4x16 SPF	1	16	0900
	Hang, Tape & Finish Drywall	1	0.5	0900
	1/2" 4x8 Drywall	1		
04 8FT2X6EXTWALL	8' - 2x6 Exterior Wall	1	0.75	0425
	2x6x92 SPF	1	0.1875	0425
	2x6x16 SPF	1	0.25	0500
	7/16"x4x9 OSB	1	0.08	0425
	R-19 6.5x16x96" 11 Batts Unfaced	1	8	0515
	Roll Insulation Labor	1	0.01	0425
	4 mil Ploy Vapor Barrier - 8'4"x100	1	8	0425
	Hang, Tape & Finish Drywall	1	0.16666	
1/2" 4x12 Drywall	1			
09 8FT2X6INT	8' 2x6 Interior Wall, Drywall both Sides	1	0.75	0900
	2x6x92 SPF	1	0.1875	0900
	2x6x16 SPF	1	16	0900
	Hang, Tape & Finish Drywall	1	0.5	
	1/2" 4x8 Drywall	1		
03 8FTPOUREDWALL	8' Tall - 8" Thick Pour Wall	1	0.1489	0305
	Concrete Ready Mix - 3000 PSI	1	1	0305
	Pour Walls Labor - Chute	1		

Simple Scheduling Features



Various task dependencies available - Enter task dependencies and day duration for each task to assure smooth on-site vendor coordination.

Note capability at task level - Add a note at task level for easy reference.

Reports: project schedule, vendor schedule & more - Various reports available to monitor vendor activities on multiple jobs.

Bar Graph schedule by phase available - Print bar graphs with or without percentage of completion displayed.

Ability to change start date with automatic date revision to all tasks - Easily recalculate ALL vendors start and end dates with the click of a button.

Schedule variance report provides supplier accountability - Track reason tasks are delayed for future reference.

Pulls from existing job in Simple Job Accounting - Schedule setup automatically setup using job cost categories.

Pulls from Bids in Simple Estimating - Schedule setup automatically set up using sub-division groups from your bid.

Clone schedule from previous schedules - Ability to copy (clone) tasks from a previous schedule. Just add a start date.

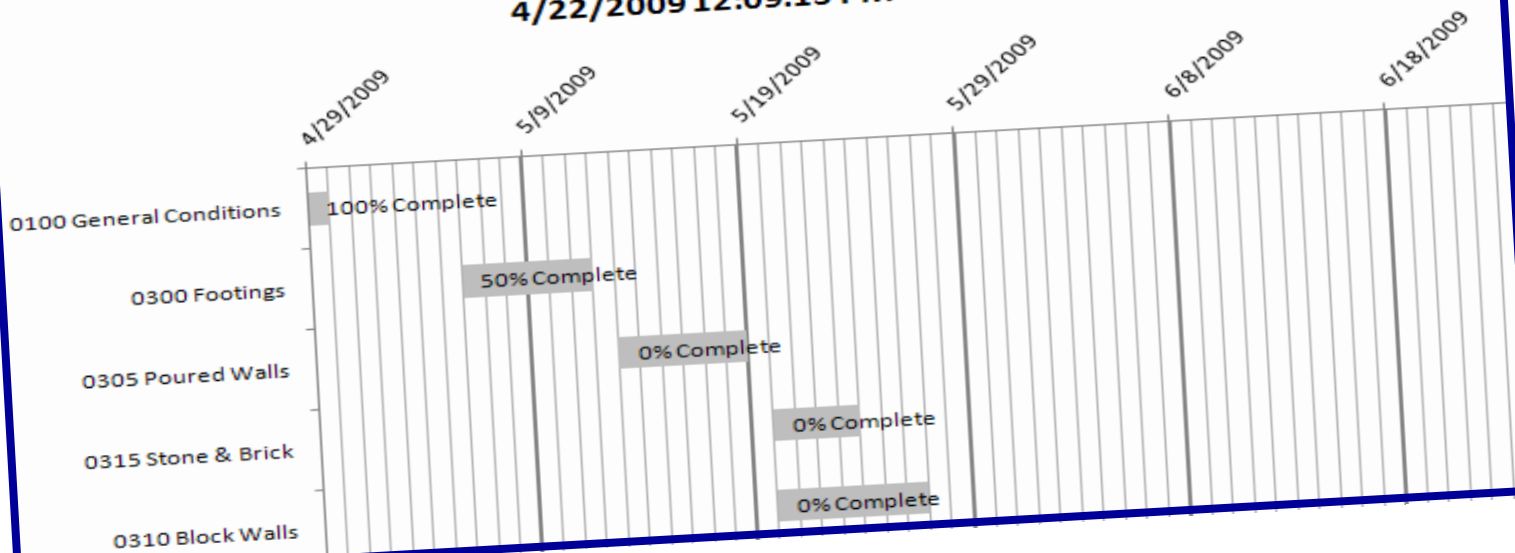
Task grouped by phases - Printing schedules by phases allows for filtering of records into smaller groups.

Project Schedule Variance

IBS2007

Task Code	Task Description	Start Date	Duration (Days)	End Date	% Complete	Original End	Variance (Days)	Notes	Supplier	Phone #
Task Phase 1										
0400	Framing Lumber	1/14/2009	3	1/16/2009	0.00%	1/13/2007	734		ALCAPENTERY	(952)555-4866
0100	General Conditions	1/14/2009	3	1/16/2009	100.00%	12/13/2006	765		1STD PRICE	
0405	Engineered Lumber	1/14/2009	8	1/23/2009	0.00%	1/18/2007	736		ABCLUMBER	(952)555-4718
0325	Flatwork, Slabs, Sidwalks, Driveways	1/14/2009	5	1/20/2009	0.00%	1/10/2007	741		CONCCON	
0320	Rebar, Remesh, Formwork	1/14/2009								

Smith Job Phase 1 4/22/2009 12:09:15 PM



Simple Job Accounting Features



Job Cost Accounting Features

- Tracks extensive job data including job code, name, address, owner, contract amount, purchaser information and lender information.
- Tracks job costs by multiple levels including Project, Job, Category and Class.
- Provides complete category information — category code, name, budget, actual costs, start and finish dates, vendor, percent complete.
- Tracks cost details and payment data by category.
- Monitors change order budgets, expenses and revenue.
- Integrates seamlessly with **Simple Estimating** so budgets can be set up directly. Saves time & reduces data errors.
- Offers full range of job cost reports—detail and summary, reports by job or category, variance reports.
- Update percent complete based on field inspection.
- Tracks costs and budgets by square foot.

Change Orders

- Provides control over change orders.
- Monitors change order budgets, expense and revenue.
- Prints a change order document for customer to sign.
- User defined change order text.
- Change orders update the revised job contract, budgets and projected profit.

General Ledger Features

- Offers double entry general ledger.
- Includes Extensive Chart of Accounts.
- See full Debit and Credit entries for an account on one screen.
- Handles multi-period processing.
- Offers listing of all posting activity.
- Date sensitive reports let you select the date range for viewing.
- Journal Entry updates Job Cost.

- Reconcile job cost to the General Ledger by job.

Accounts Payable Features

- Tracks full vendor/subcontractor insurance information;
 - track workers comp insurance expiration dates and insurance codes
 - track general liability insurance information
 - allows you to withhold insurance amounts from sub invoice
 - track withholding per sub
- Tracks sub retainage amount by percent (%) and dollar (\$) amount.
- Vendor default job category and class for invoice entry.
- Optional default General Ledger account for invoice entry.
- Tracks vendor default discount and due date.
- Provides over budget warning when entering invoice.
- Updates Job Cost and General Ledger.
- Creates and prints lien waivers.
- Prints 1099s.
- Handles partial payments.
- Provides complete vendor history– invoices, amounts, payment dates and more.
- Easy-to-use check writing plus check number, vendor and job.
- Provides check reconciliation system.

Accounts Receivable Features

- Tracks customers activity (invoices, payments).
- Quickly and easily bill for work performed.
- Allows entry of item or work description.

General Features

- Runs under Microsoft Windows so it's easy to learn and use. The Windows graphical environment is simple and intuitive — even for beginners.
- Follows standard Microsoft Windows navigation protocols — if you already use Windows, learning is a cinch!
- Uses plain paper for reports — no pre-printed forms required
- More than 200 reports available.
- Offers "pull down" list boxes for easy access to information; eliminates tedious searches.
- Seamless integration with **Simple Estimating** and **Simple Scheduling**.

IBS 2009												4/8/2009
Job Profit & Loss With Billings												
Open	Original Contract	Revised Contract	Job % Complete	Earned	Billed	Over/Under Billed	Cost to Date	Projected Total	Projected Profit/Loss	Profit to Date	Cost to Complete	Contract Balance
Ander47	\$223,000.00	\$225,000.00	15.30%	\$34,420.81	\$124,018.41	\$89,597.60	\$28,932.83	\$199,613.82	\$25,386.18	\$3,883.61	\$170,680.99	\$100,981.59
Happy Valley-Lot2					Job Status	Open						
Bull001	\$12,000.00	\$12,000.00	104.28%	\$12,513.30	\$13,955.00	\$1,441.70	\$10,427.75	\$12,972.75	(\$972.75)	(\$1,014.36)	\$2,545.00	(\$1,955.00)
Bullfrog job					Job Status	Open						
Report Totals	\$235,000.00	\$237,000.00	\$46,934.41	\$137,973.41	\$91,039.30	\$39,360.58	\$212,586.57	\$24,413.43	\$2,869.25	\$173,225.99	\$99,026.59	

Simple Job Accounting Features & Reports

Payroll

- Posts payroll expenses to Job Cost for accurate costing
- Variable rate payroll system
- Handles Workers Comp
- Prepares tax reports: 940, 941, W2's & more
- Handles Section 125 Cafeteria Plans
- Handles custom deductions & tax withholdings
- Certified payroll report
- Multi-state payroll
- Craft codes for variable rate & billing rates

Scheduling

- Integrates with Simple Scheduling for full scheduling control
- Handles percent complete, start & finish dates & more
- Reports job activities scheduled, sub to-do lists & more

IBS 2009				JOB CATEGORY STAT				4/21/2009	
Category	CL	% Comp	Budget	Change Orders	Rev Budget	Cost	Over/Under Budget Based on % Complete	Budget Remain	
Ander47 Happy Valley-Lot2								Loan Amount	\$200,000.00
Customer							Bank Draws to Date	\$22,000.00	
Contract Amount			\$225,000.00				AR Invoiced to Date	\$0.00	
Projected Profit			\$24,889.68				AR Paid to Date	\$0.00	
							AP Paid to Date	\$23,945.91	
Totals			\$187,501.61	\$1,600.00			\$25,050.91	\$10,983.82	\$168,575.99
0100	General Conditions	S	0.00%	\$3,860.00			\$0.00	\$0.00	\$3,860.00
0100	General Conditions	A	0.00%	\$58,050.00			\$0.00	\$0.00	\$58,050.00
0105	Temporary Facilities	E	0.00%	\$520.00	\$0.00	\$520.00	\$0.00	\$0.00	\$520.00
0105	Temporary Facilities	L	0.00%	\$6,000.00	\$0.00	\$6,000.00	\$2,797.50	\$0.00	\$3,202.50
0105	Temporary Facilities	O	0.00%	\$600.00	\$0.00	\$600.00	\$1,103.71	\$0.00	\$503.71
0110	Survey	S	0.00%	\$500.00	\$0.00	\$500.00	\$0.00	\$0.00	\$500.00
0200	Site Preparation	M	0.00%	\$420.00	\$0.00	\$420.00	\$5,420.00	\$5,000.00	\$0.00
0200	Site Preparation	S	0.00%	\$750.00	\$0.00	\$750.00	\$1,100.00	\$100.00	\$350.00
0205	Earthwork	M	0.00%	\$300.00	\$0.00	\$300.00	\$300.00	\$0.00	\$0.00
0205	Earthwork	S	0.00%	\$2,730.00	\$0.00	\$2,730.00	\$1,000.00	\$0.00	\$1,730.00
0210	Utility Services	S	0.00%	\$1,000.00	\$0.00	\$1,000.00	\$0.00	\$0.00	\$1,000.00
0215	Drainage	M	0.00%	\$1,446.25	\$0.00	\$1,446.25	\$1,000.00	\$0.00	\$446.25
0230	Gravel, Paver Base,	S	0.00%	\$888.00	\$0.00	\$888.00	\$0.00	\$0.00	\$888.00
0300	Footings	S	0.00%	\$1,900.00	\$200.00	\$2,100.00	\$1,100.00	\$0.00	\$1,000.00
0310	Block Walls	S	0.00%	\$4,200.00	\$0.00	\$4,200.00	\$0.00	\$0.00	\$4,200.00
0400	Framing Lumber	M	0.00%	\$916.50	\$15.78	\$932.28	\$1,215.78	\$1,215.78	\$283.50
0400	Framing Lumber	S	0.00%	\$9,415.00	\$640.00	\$10,055.00	\$1,540.00	\$0.00	\$8,515.00
0410	Treated Lumber	M	0.00%	\$769.12	\$769.12	\$1,538.24	\$1,000.00	\$0.00	\$538.24

Shows Cost Overruns

Tracks original budget, change orders and revised budgets and actual costs by category of work.

Simple Job Accounting Job Cost Reports

4/7/2009

IBS 2009 JOB CATEGORY STATUS WITH HOURS

Open

Category	CL	Budget Hours	CO Budget Hours Approved	Rev Budget Hours	Actual Hours	Hours Diff	Rev Budget	Cost	Margin	Margin %
		0	0	0	0	0	\$4,098.00	\$0.00	\$4,098.00	100.00%
0600	Windows	0	0	0	0	0	\$2,200.00	\$0.00	\$2,200.00	100.00%
0605	Interior Doors	0	0	0	0	0	\$1,990.00	\$0.00	\$1,990.00	100.00%
0610	Exterior Doors	0	0	0	0	0	\$377.38	\$0.00	\$377.38	100.00%
0615	Hardware	0	0	0	0	0	\$0.00	\$0.00	\$670.00	100.00%
0620	Garage Doors & Har	0	0	0	0	0				
0700	Shingles	260	0	0	260	120				
0700	Shingles	0	0	0	0	0				

Budget Hours	CO Budget Hours Approved	Rev Budget Hours	Actual Hours	Hours Diff
0	0	0	0	0
0	0	0	0	0
0	0	0	0	0
0	0	0	0	0
0	0	0	0	0
0	0	0	0	0
260	0	260	120	140

Job Cost Detail IBS 2009

Invoice #	Cost Description	Budget	Actual	Hours
ABC Lumber Company	Check			
Total for Category 0205 S	Earthwork	Budget		
ABC Lumber Company 7881			3/6/2009	\$1,000.00
Total for Category 0215 M	Drainage	Budget \$1,446.25		\$1,000.00
Std Price in System	Ander		12/28/2008	\$15.78
ABC Lumber Company 9817			4/7/2009	\$1,200.00
Total for Category 0400 M		Budget \$932.28		\$1,215.78
Al's Carpentry 1254			2/9/2009	\$1,540.00
Total for Category 0400 S	Framing Lumber	Budget \$10,055.00		\$1,540.00
ABC Lumber Company 154			2/12/2009	\$1,000.00
Total for Category 0410 M	Treated Lumber	Budget \$1,538.24		\$1,000.00
ABC Lumber Company Ander47-00020	Deck Framing Package	Ace Hardware	12/28/2008	\$7,017.73
Total for Category 0420 M	Deck Framing Package	Budget \$7,017.73		\$7,017.73
ABC Lumber Company Ander47-00026	Roll Insulation		12/28/2008	\$179.90
Total for Category 0500 M	Roll Insulation	Budget \$167.74		\$179.90
Clarence McDonald	Clarence McDonald - Payroll		10 1/7/2006	\$175.00
Clarence McDonald	Clarence McDonald - Payroll		10 1/14/2007	\$175.00
Clarence McDonald	Clarence McDonald - Payroll		10 1/21/2009	\$175.00
Jerry Smith	Jerry Smith - Payroll		30 1/7/2006	\$450.00
Jerry Smith	Jerry Smith - Payroll		30 1/14/2007	\$450.00
Jerry Smith	Jerry Smith - Payroll		30 1/21/2009	\$450.00
Total for Category 0800 L	Vinyl Siding	Budget \$1,544.40	120.00	\$1,875.00

Tracks Hours

Simple Job Accounting Check Writing

IBS 2009 - [Checking Account Deposits and Adjustments]

File Edit Records Help

Checking Account Deposits and Adjustments - Transaction

Bank Account: First National Transaction Type: Check

1028

IBS 2009
1834 No St Paul Road
North St Paul, MN 55109
Phone: 6517777716

Date: 03/02/09

Pay to the Order Of: ABC Lumber Company \$1,000.00
One Thousand & 00/100 Dollars

First National Joint Payee
Memo: Std Price in System

Void 5646 123456987 1028

Check Stub:

Job	Category	CL	Account	Description	Amount
Ander47	0205	S	4000	Cost of Goods Sold	\$1,000.00
					\$0.00
Total:					\$1,000.00

Workers Comp Expired
GL Ins Expired

Quick Check

Checking Account Deposits and Adjustments - Register

Bank Account: First National Transaction Type: Check

Sort Register By

Entry Order Check # Check Date

Cleared	Check #	Date	Payee	Memo	Trans	Payment	Deposit	Acct Bal	Printed	Print Date
<input type="checkbox"/>	1000	01/09/06	Henry, Sally S	Payroll Check	Check	\$442.35	\$0.00	(\$442.35)	No	
<input type="checkbox"/>	1001	01/09/06	McDonald, Clarence	Payroll Check	Check	\$590.99	\$0.00	(\$1,033.34)	No	
<input type="checkbox"/>	1002	01/09/06	Smith, Jerry M	Payroll Check	Check	\$576.19	\$0.00	(\$1,609.53)	No	
<input type="checkbox"/>		11/20/05			Deposit	\$0.00	\$1,000.00		No	
<input type="checkbox"/>		12/28/05			Deposit	\$0.00	\$10,000.00		No	
<input type="checkbox"/>	1003	12/28/05	ABC Lumber Comp		VOID-Check	\$5,000.00	\$0.00		No	
<input type="checkbox"/>		01/11/07			Deposit	\$0.00	\$1,000.00		No	
<input type="checkbox"/>		02/25/07			Deposit	\$0.00	\$10,000.00		No	
<input type="checkbox"/>	1003	01/16/07	Henry, Sally S	Payroll Check	Check	\$442.35	\$0.00		No	
<input type="checkbox"/>	1004	01/16/07	McDonald, Clarence	Payroll Check	Check	\$427.90	\$0.00		No	
<input type="checkbox"/>	1005	01/16/07	Smith, Jerry M	Payroll Check	Check	\$550.60	\$0.00		No	
<input type="checkbox"/>	1006	10/02/07	Al's Carpentry		Check	\$100.00	\$0.00		No	
<input type="checkbox"/>	1007	12/22/08	Rolling Rock Lands		Check	\$300.00	\$0.00		No	
<input type="checkbox"/>	1006	01/23/09	Henry, Sally S	PR Check	Check	\$443.78	\$0.00		No	
<input type="checkbox"/>	1007	01/23/09	McDonald, Clarence	PR Check	Check	\$430.59	\$0.00		No	
<input type="checkbox"/>	1008	01/23/09	Smith, Jerry M	PR Check	Check	\$550.60	\$0.00		No	
<input type="checkbox"/>		01/06/09		Owner Earnest	Deposit	\$0.00	\$5,000.00		No	

Record: 1 of 41

Bank Transfers

Check/Deposit

Register

Done

Workers Comp Auditors Report By Employee by Ins Code

IBS 2008 Plus XP New

For the Period From 1/1/2009 To 12/31/2009

Check Date	Reg Hours	Reg Pay	OT Hours	OT Pay	Total Pay	Exempt Pay	Qual Pay	Rate	Premium
McDonald, Clarence									
Carpenters									
1/8/2009	45	\$637.50	0	\$0.00	\$637.50	\$0.00	\$637.50	0.3	\$191.25
1/15/2009	45	\$637.50	0	\$0.00	\$637.50	\$0.00	\$637.50	0.3	\$191.25
1/22/2009	45	\$637.50	0	\$0.00	\$637.50	\$0.00	\$637.50	0.3	\$191.25
1/29/2009	45	\$637.50	0	\$0.00	\$637.50	\$0.00	\$637.50	0.3	\$191.25
2/5/2009	45	\$637.50	0	\$0.00	\$637.50	\$0.00	\$637.50	0.3	\$191.25
2/12/2009	45	\$637.50	0	\$0.00	\$637.50	\$0.00	\$637.50	0.3	\$191.25
2/19/2009	78	\$982.50	11	\$165.00	\$1,147.50	\$0.00	\$1,147.50	0.3	\$344.25
2/26/2009	78	\$982.50	11	\$165.00	\$1,147.50	\$0.00	\$1,147.50	0.3	\$344.25
Employee	McDonald, Clarence	426	\$5,790.00	22	\$330.00	\$6,120.00	\$0.00	\$6,120.00	\$1,836.00
Smith, Jerry M									
Carpenters									
1/8/2009	42.5	\$575.00	4	\$60.00	\$635.00	\$0.00	\$635.00	0.3	\$190.50
1/15/2009	42.5	\$575.00	4	\$60.00	\$635.00	\$0.00	\$635.00	0.3	\$190.50
1/22/2009	42.5	\$575.00	4	\$60.00	\$635.00	\$0.00	\$635.00	0.3	\$190.50

Track Workers Compensation for both Employees and Vendors

IBS 2008 Plus XP New

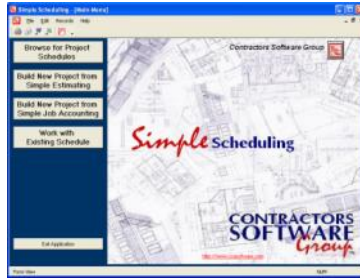
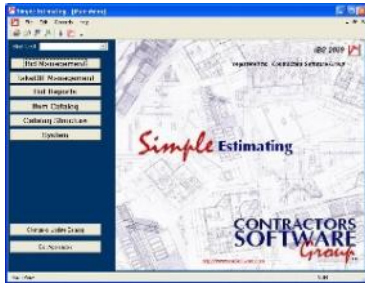
4/8/2009

Worker's Compensation Insurance Analysis - Detail

Payments For the Period From 1/1/2009 To 12/31/2009

Invoice Number	Invoice Date	Invoice Amount	Percent Labor	Premium Rate	WC Premium	WC Withholding Rate	Amount Withheld	Variance
ABCLUMBER	ABC Lumber Company		<u>Ins Code</u>		<u>WC Policy Expiration date</u>	12/31/2006		
91	3/9/2009	\$785.12	0.45	0.45	\$158.99	0.45	\$158.99	\$0.00
92	4/2/2009	\$375.00	0.45	0.45	\$75.94	0.45	\$75.94	\$0.00
Total	ABC Lumber Company	\$1,160.12			\$234.92		\$234.93	\$0.01
BMPLUMB	B & M Plumbing		<u>Ins Code</u>		<u>WC Policy Expiration date</u>	4/17/2008		

The *Simple* SERIES Package



Complete integrated solution \$1,495⁰⁰

Additional Concurrent Users each \$995⁰⁰

Additional Options

Digital Canal \$995⁰⁰

The *Simple* SERIES

Production Homebuilder Edition

Hardware/Software Requirements

Access Client Installation	Minimum Requirements	Recommended Requirements
Operating System	Windows XP Pro SP3, Windows Vista Business, Ultimate or Enterprise SP2, Windows 7 Pro	Windows XP Pro SP3, Windows Vista Business, Ultimate or Enterprise SP2, Windows 7 Pro
Disk Space: Client Program Files	3 GB free	10 GB free
Processor	Pentium 4 – 1.0 GHz	Pentium 4 – 3.0 GHz or higher
RAM	1.0 Gb	4.0 Gb or higher
Optical Drive	CD-ROM	CD-ROM
Input Device	Microsoft compatible mouse and keyboard	Microsoft compatible mouse and keyboard
Display	SVGA or higher (1024 x 768)	SVGA or higher (1024 x 768 recommended)
Printer	HP LaserJet or HP LaserJet compatible	HP LaserJet or HP LaserJet compatible
Software	Microsoft Word 2000 or greater required for SalesBuilder Plus	Microsoft Word 2000 or greater required for SalesBuilder Plus
Internet Service	High speed internet access	High speed internet access
Server Installations	Minimum Requirements	Recommended Requirements
Operating System	Windows Server 2003	Windows Server 2008, R2
Disk Space	300 Gb	1 Tb
Processor	1 Quad Core i7	Dual Quad Core i7's or Single Xeon
RAM	8 Gb	16 Gb – 24 Gb
Terminal Server (Cloud)	5 Client Access Licenses (CAL's) or number of users	5 Client Access Licenses (CAL's) or number of users
**VPN – NOT SUPPORTED	Use at your own risk of slow process speed and possible data corruption.	Use at your own risk of slow process speed and possible data corruption.

Service & Support

Contractors Software Group is committed to providing superior product. You'll find our software is easy to set up and use — even if you've never used a computer before. We offer implementation and support services via certified distributors, dealers and consultants

**CONTRACTORS
SOFTWARE**
Group™

1834 North St. Paul Road
St. Paul, MN 55109
651-777-7716
651-777-8350 (fax)
Sales: 800-866-3083
www.csgsoftware.com

Increase **PRODUCTIVITY**

Increase **PROFITABILITY**

Increase **BUSINESS**